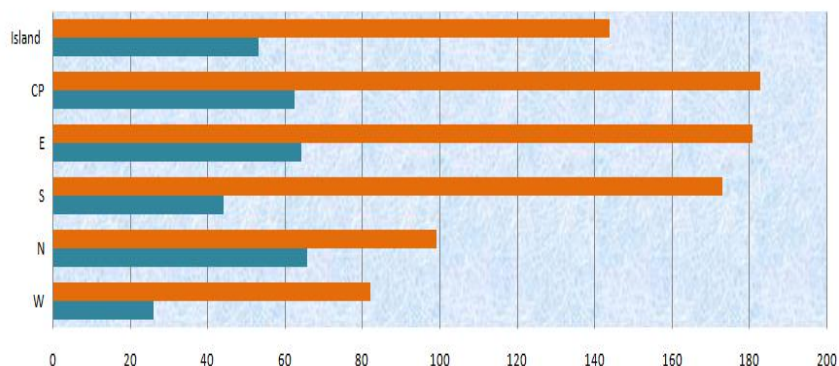


Mean Rainfall for 1-15 March 2019

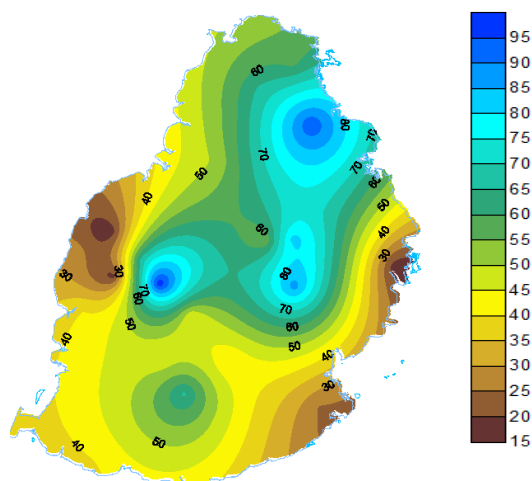
Mauritius

Rather dry conditions prevailed during the first fortnight of March 2019 with below normal rainfall amounting to 53 mm, representing 37 % of the long term mean for the period. All regions over the island had deficient rainfall. Some places over the Central Plateau had deficient rainfall of over 200 mm.

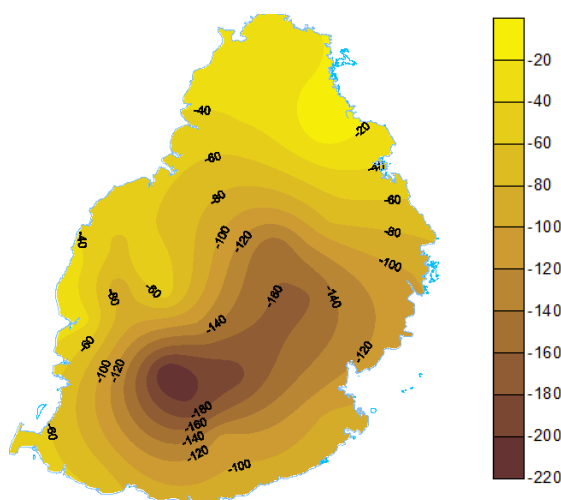


	W	N	S	E	CP	Island
LTM (1981-2010) Rainfall (mm)	82	99	173	181	183	144
Actual Mean rainfall (mm)	26	66	44	64	62	53

Observed Rainfall (mm)



Rainfall Anomaly (mm)



Outer Islands

Stations	Amount (mm)		
	Actual Mean Rainfall	LTM Rainfall	% of LTM
Rodrigues	Pointe Canon	92	146
	Plaine Corail	157	231
	Citronelle	124	151
	Agalega	62	67
St Brandon	48	70	

Very wet conditions prevailed at Rodrigues with above normal rainfall

Slightly below normal rainfall was observed at St. Brandon

Below normal rainfall was observed at Agalega

Ram Dhurmea
For Director
03 April 2019